



AURA[®]

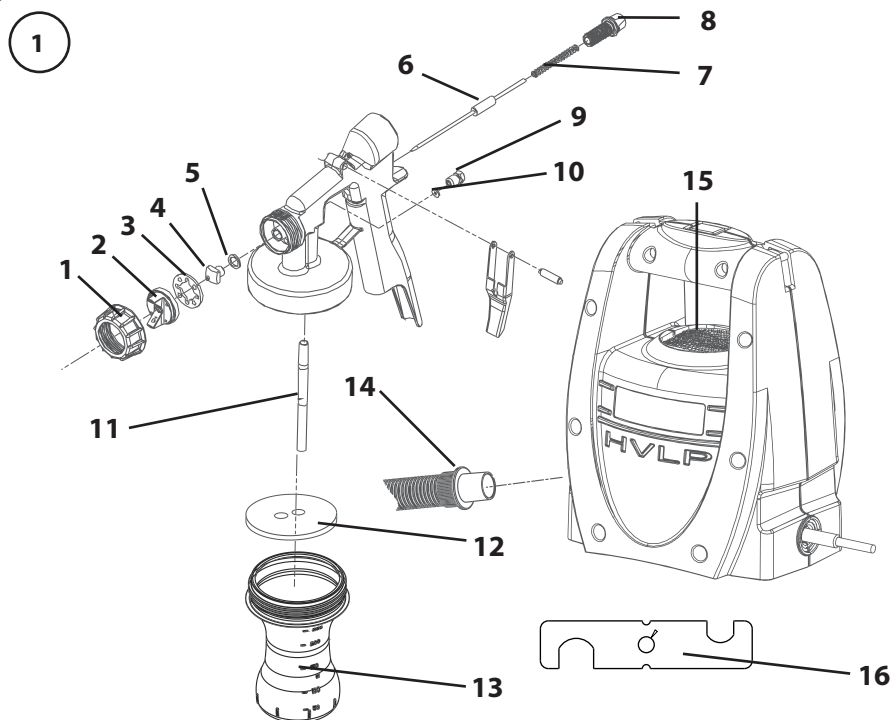
Spraying Innovations



Tan Spray Station[®] TS20

Instruction Manual and User Guide

EN

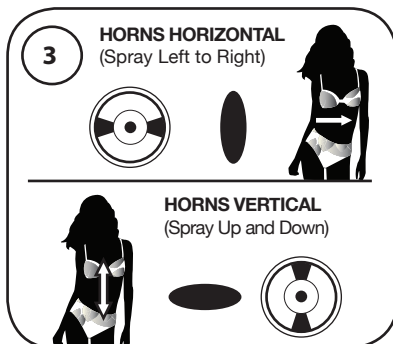


Spare Parts List (Fig. 1)

Pos.	Designation	Order No.
1	Air Cap Ring	L0215
2	Air Cap	L0205
3	Spray Direction Plate	L0206
4	Solution Nozzle/Spray Tip	L0284
5.	Solution Nozzle Gasket	L0211
6	Solution Needle	L0283
7	Spring	L0216
8	Solution Flow Screw	L0210
9	Gland Nut	L0208
10	Gland Seal	L0272
11	Pick-Up Tube	L0947
12	Cup Gasket	L0335
13	Tanning Cup (Clear)	L0909
14	Air Hose	L2030
15	Filter	L2037
16	Spanner	L0266

Set-up and use of your TS20

1. Insert the Air Hose (Fig. 1, 14) into the turbine. The hose has a 'twist and lock' feature and therefore needs to be fitted carefully into the entry point. Do not force the hose into place; damage to the hose will cause the fitting to become loose.
2. Insert the other end of the hose into the back of the gun. Push in firmly to prevent the Air Hose (Fig. 1, 14) popping off when the unit is running.
3. Fill the Tanning Cup (Fig. 1, 13) to the 100ml mark. Use no more than 50ml of tanning solution if used properly. Screw the Tanning Cup (Fig. 1, 13) onto the gun.
To ensure you are using your tanning gun to its best capability, please ensure it is set up accordingly;
4. We recommend the Solution Flow Screw (Fig. 1, 8) on the rear of the spray gun is tightened fully, and then turned anticlockwise by approximately ¼ turn to an 8/9 o'clock position. Turning clockwise will reduce the spray pattern and turning anticlockwise will increase the spray pattern (Fig. 2).
5. Before operating the unit please ensure that the container is securely fixed to the gun body and the Gland Nut (9) is not loose. Doing this will create an airtight seal, that is essential for the correct operation of the TS20 unit. Over time the Gland Seal (10) will wear and need adjusting. To check the Gland Nut is correctly fitted use the spanner included with this unit. Pull the trigger back and hold while gradually tightening the Gland Nut by turning it in a clockwise direction until the Trigger and Needle (6) is not free to move when the trigger is released. To obtain the optimum setting gradually unscrew the nut by turning it in an anti-clockwise direction until the Trigger springs forward and the Needle moves completely forward into the Solution Nozzle/ Spray Tip (4).
6. Test the spray / volume on a kitchen towel. The spray should not soak through the towel, but only cover the surface with an even spray. If it soaks through, adjust the Solution Flow Screw (Fig. 1, 8) clockwise to allow less solution to pass through the gun.
7. Your goal is a 4 inch wide spray pattern, spraying 4 inches away from your client's body. A wider pattern will only waste tanning solution and cost you money.
8. The Air Cap (Fig. 1, 2) can be adjusted to create a horizontal or vertical spray pattern. Spray horizontal or vertical movements over the body (Fig. 3). **KEEP THE SPRAY GUN IN AN UPRIGHT POSITION, DO NOT ROCK OR TIP!**
Following these points will provide a fine mist on the skin, not allowing the solution to run, and therefore producing better results. This in turn will help you use less solution and save you money. Becoming familiar with the adjustments is very important.
9. Do not overlap a just-applied part of the body, you will only need one coating of tanning solution if used correctly.
10. Use barrier cream on areas such as feet and hands where there may be build-up of solution within the crease of the skin. Using 'sticky feet' is also advised to prevent solution building up on the base of the feet.
11. Best developed colour results will be achieved by waiting 8-12 hours after application before first shower. It is also advised not to shower, use deodorant or moisturizers just before a spray tan.
12. Keep the turbine as far away as possible from the spray area. The turbine consumes large volumes of air and if too close this can cause the turbine to become contaminated with the tanning solution overspray and cause damage to the unit.
13. We advise placing your TS20 motor unit on newspaper or a tray to avoid build up of solution around the machine and prevent staining of the flooring.
14. Once turned on you will hear a sound similar to a vacuum cleaner. You may also notice air



blowing from the front of the spray gun. This is correct. Air will continually flow from the Air Cap (Fig. 1, 2) of the spray gun as long as the turbine unit is running and the Air Hose (Fig. 1, 14) is connected.

Trouble-shooter

Where should I place my tanning machine?	→ Outside the tanning tent as far away from spraying area as possible in a well-ventilated room.
Can I lie my gun on its side?	→ Always keep the tanning gun upright! If tipped it can cause solution to run down the hose and collect in the machine. This can impair the functionality of the gun.
Should I clean the filter?	→ Make sure you hold your gun 4 inches away from the client's body as you spray. Keeping at this distance constantly will ensure the tan is even.
The finish on my client's skin is looking uneven?	→ Using a tanning mitt you can gently blot the dripping solution already on the skin to avoid streaks.
The tanning solution is dripping on the client's skin?	→ Adjust the Solution Flow Screw (8) on the back of your gun clockwise until less solution exits the gun when you spray.
Spray tanning solution runs down body	→ Carefully dab affected points with a towel, reduce flow setting if required and lightly overspray again.
Spray Tan Solution dripping from the Gland Nut	→ Tighten the Gland Nut with the spanner (see instruction number 5)

INFORMATION ON THE DISPOSAL OF WASTE ELECTRICAL & ELECTRONIC EQUIPMENT KNOWN AS WEEE

Please do not dispose of tools with your household waste collected by the council. It is your responsibility to dispose of this type of waste by handing it over to a special designated collection point for recovery and recycling.



CONTACT YOUR DEALER FOR ALL GUARANTEE CONCERNS AND ASSISTANCE

Wagner Spraytech (UK) Ltd.

Opus Park, Moorfield Road,
Guildford, Surrey GU1 1SZ,
United Kingdom

Tel: +44 (0)1483 501009

Fax: +44 (0) 1483 454548

Email: info@aurasprayers.com

Web: www.aurasprayers.com

GB EC Declaration of Conformity

We declare under sole responsibility that this product conforms to the following relevant stipulations:

2006/42/EC; 2004/108/EC; 2011/65/EU; 2002/96/EC; 2006/95/EC

Applied harmonised norms:

EN 60335-2-23:2012, EN 60335-1:2012, EN 62233;
EN 55014-1:2006 + A1:2009 + A2:2011, EN 55014-2:1997 + Corrigendum 1997 + A1:2001 + A2:2008,
EN 61000-3-2:2006 + A1:2009 + A2:2009, EN 61000-3-3:2008

Design Registrations

GB 3019115
US D536,706S